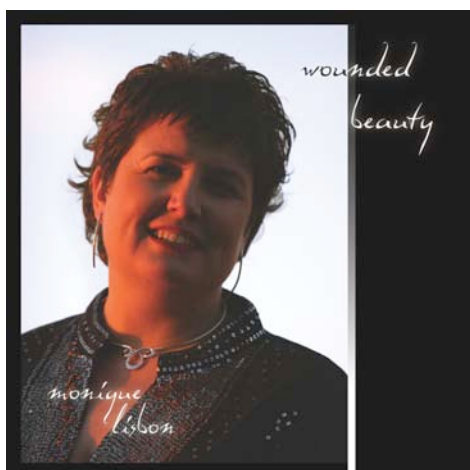


Still

Can I be still
Or am I too scared
Of what I will discover
If I am still too long?

Be still my soul
The Lord is on your side
Bear patiently
The cross of grief and pain

Verse 1 words by Monique Lisbon
Verse 2 words by Katharina A. von Schlegel, 1752
Public Domain
Music by Monique Lisbon
© MonoMusic 2006



This song comes from
the CD *Wounded Beauty*
(© MonoMusic 2006)

To order this product,
[click here](#)